

3 PLACES IN NEW YORK

FOR SLEE SYNFONIETTA

ALON NECHUSHTAN 2018

A ♩=96 1. STORM KING

(STRINGS) (STRINGS) (STRINGS) (STRINGS) (PIANO) (HARP) (PIANO) (HARP)

B

7 9-15 6 5 sfz

18 5 5 mf mp f p

C

21 2 3 mf sfz ff

32 6 3 p sfz ppp p

36 3 5 mp mf mf mp mf

D

40 3 5 f mf mf mp mf

E

44 6 3 mp p f mp mf

STOP ABRUPTLY

F

48 5 4 mp mf f mf

SEMPRE

53 *f* *mp* *SUBITO* *mf* *f* *FURIOUSO* *f* *ff* *2*

58 *f* *f* *f* *f* *ff* *FURIOUSO* *f* *mf* *SIM...* *2*

62 *f* *f* *f* *f* *f* *f* *MOLTO DECISO E RITMICO* *f* *5* *3*

65 *mf* *f* *3* *7:4* *3* *3* *3* *5*

67 *f* *3* *3* *3* *ff* *3* *3* *3* *3* *4*

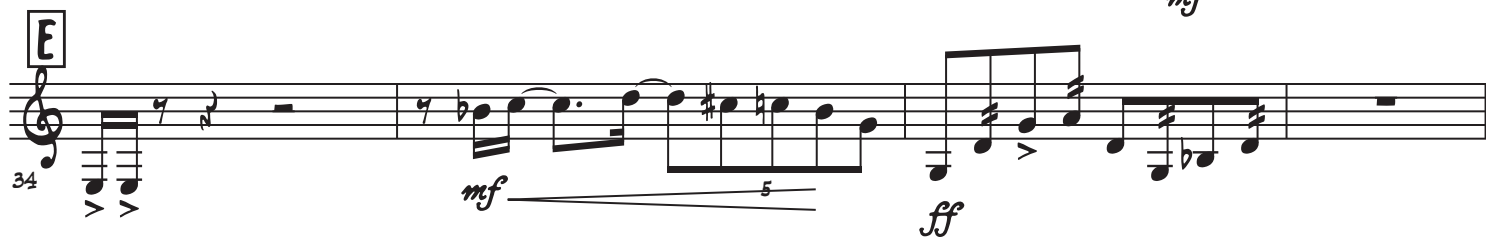
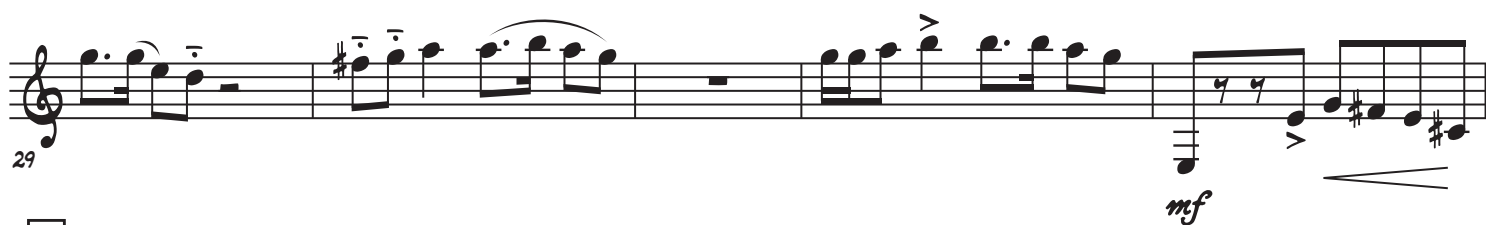
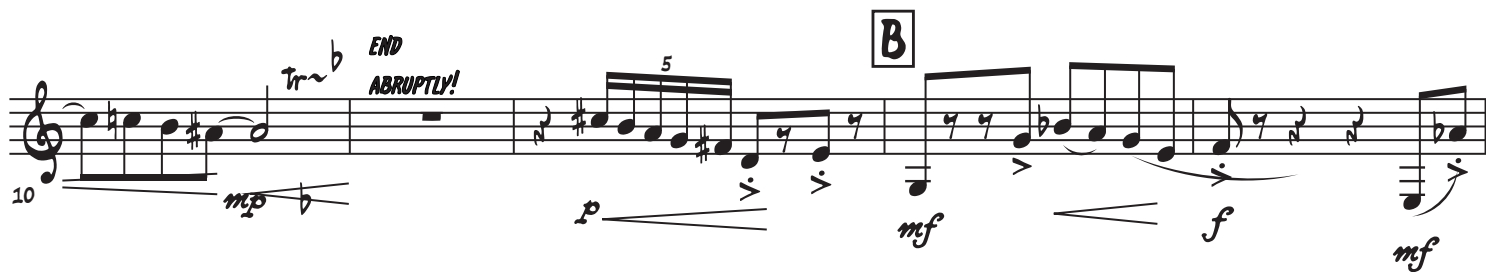
69 *f* *mf* *ff* *2* *3* *H*

76 *mf* *mp* *f* *f* *pp* *SEMPRE*

81 *N(IENTE)*

2. CYCLONE

A $\text{♩} = 102$
5



42 *fp* *fp* *fp* *fp*

46 *mf* *fp* *f*

51 *mf* *ff*

57 *f*

61-64

70 *mf*

75 *mf* *f* *mf* *f* *mf*

80 *sfz*

12

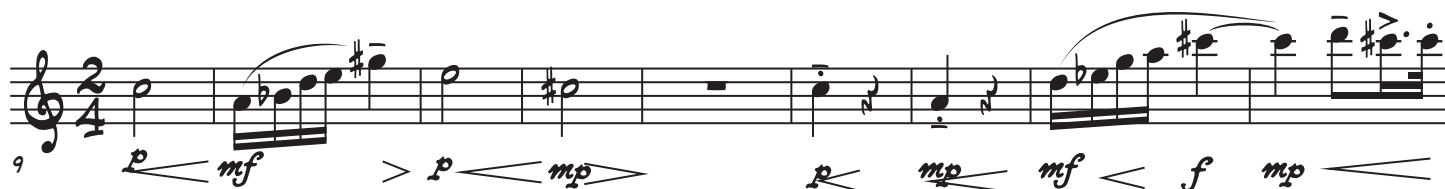
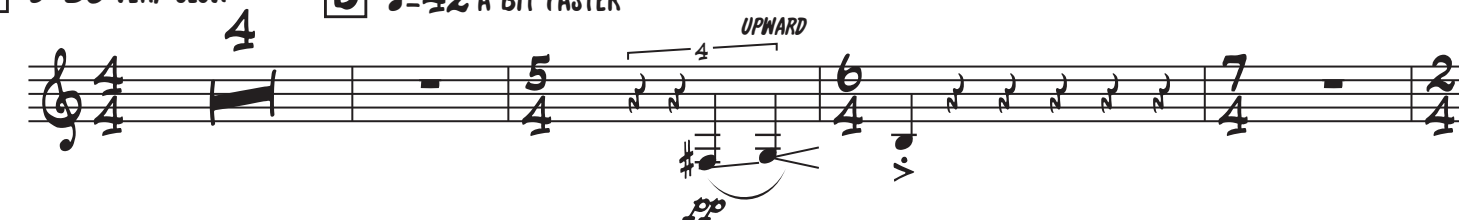
III. THE OLD INDIAN TRAIL, HASTINGS ON HUDSON

ALON NECHUSHTAN 2018

A ♩=36 VERY SLOW**B** ♩=42 A BIT FASTER

SLOW 1/4 BEND

UPWARD

**C** ♩=48 A BIT FASTER**D** ♩=54 A BIT FASTER**E** ♩=60 A BIT FASTER

45 *f* *mp* *mp*

Musical staff 45-50 in treble clef, key of D major. It begins with a whole rest, followed by a triplet of eighth notes (D4, E4, F#4) marked *f*. The melody continues with eighth and quarter notes, including a half note G#4, and ends with a quarter note D5 marked *mp*.

51 *mf* *f*

Musical staff 51-54 in treble clef, key of D major. It features a triplet of eighth notes (D4, E4, F#4) marked *mf*, followed by a series of eighth and quarter notes. A crescendo leads to a quarter note D5 marked *f*.

55 *f* *mf*

Musical staff 55-57 in treble clef, key of D major. It starts with a quarter note D4, followed by eighth notes. A crescendo leads to a quarter note D5 marked *f*, then a half note D5 marked *mf*.

58 *p* *mp* *p* *mf* *mp*

F ♩ = 66-72 A BIT FASTER

Musical staff 58-62 in treble clef, key of D major. It begins with a quarter note D4, followed by eighth notes. A crescendo leads to a quarter note D5 marked *p*, then a half note D5 marked *mp*. A crescendo leads to a quarter note D5 marked *p*, then a half note D5 marked *mf*. A crescendo leads to a quarter note D5 marked *mp*.

63 *mp*

Musical staff 63-65 in treble clef, key of D major. It begins with a quarter note D4, followed by eighth notes. A crescendo leads to a quarter note D5 marked *mp*.

68 *f* *ff* *pp*

G ♩ = 36 TEMPO I (HALF TIME)

SLOW 1/4 BEND UPWARD

Musical staff 68-71 in treble clef, key of D major. It begins with a triplet of eighth notes (D4, E4, F#4) marked *f*, followed by a triplet of eighth notes (G#4, A4, B4) marked *f*. A crescendo leads to a quarter note D5 marked *ff*. A crescendo leads to a quarter note D5 marked *pp*. A crescendo leads to a quarter note D5 marked *pp*.

72 *p* *pp*

Musical staff 72-75 in treble clef, key of D major. It begins with a quarter note D4, followed by eighth notes. A crescendo leads to a quarter note D5 marked *p*, then a half note D5 marked *pp*.